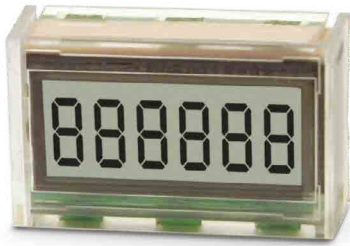
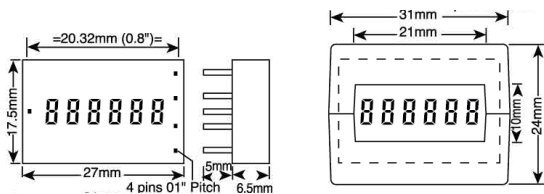


## 7000 / 7000AS Series

6-digit LCD Electronic Totalising Counter



Miniature, 6-digit LCD PCB mounted totalising counter designed for minimal power requirement. These miniature 6-digit totalising counters are suitable for either direct PCB mounting, or panel mounting with bezel supplied (pictured above without bezel).



### Features

- Current consumption less than 10uA
- 6mm black character high contrast LCD display
- Bi-directional counting (7000AS model)
- Counts pulses up to 10kHz frequency
- External reset input
- CE, UL and cUL approved

The 7000/7000AS can also be configured to count electro-mechanical contact closure events using an external resistor and capacitor to eliminate contact bounce. Similarly the supply voltage can be increased using an external resistor and 3V zener diode. See instruction leaflet for details.

### Specification

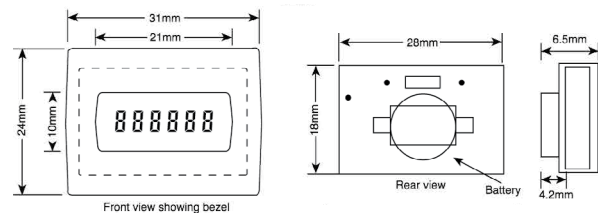
<b>Supply Voltage</b>	2.6 - 3.4VDC
<b>Current Consumption</b>	10µA quiescent, 20µA at 10kHz
<b>Display</b>	6-digit black LCD, 6mm characters with leading zero blanking
<b>Count Range</b>	999999 display rollover to 0
<b>Count Input</b>	10kHz maximum, negative edge triggered, 0.7V threshold, 50µS minimum pulse length, TTL/CMOS Compatible
<b>Reset Input</b>	Active low, 0.7V threshold, 15mS minimum pulse length, TTL/CMOS Compatible
<b>Direction Input (AS model only)</b>	Add=logic 1, Subtract=logic 0 (0V)
<b>Operating Temp.</b>	-10°C to +60°C [14°F to 140°F]
<b>Storage Temp.</b>	-10°C to +60°C [14°F to 140°F]
<b>Material</b>	Clear polycarbonate. Supplied with black ABS panel mount bezel
<b>Environmental Protection</b>	IP40/DIN40050
<b>Weight</b>	7.5g [0.3oz.]

## 7016

6-digit LCD Electronic Totalising Counter



The 7016 comes ready for mounting and features flying leads for connection to remote contact closure input devices.



### Features

- Self-powered for 3-4 years using a 1.5V button cell
- 6-digit 6mm character high contrast LCD display
- Low power CMOS circuitry to achieve an expected battery life of 3 to 4 years at 20°C
- Simple to install
- Integral de-bounce circuitry
- CE approved

The counter increments when contacts are opened. It may be panel mounted with the supplied bezel.

### Specification

<b>Supply Voltage</b>	1.5V button cell SR44 (supplied)
<b>Expected Battery Life</b>	3 - 4 years at 20°C
<b>Display</b>	6-digit LCD, 6mm characters
<b>Count Range</b>	999999 display rollover to 000000
<b>Count Input</b>	High speed - 12Hz. Low speed - 0.2Hz, contact closure. Operates on contact opening. Negative edge triggered - 12Hz max
<b>Reset</b>	Reset to zero on external reset input and insertion of battery
<b>Operating Temp.</b>	0°C to +50°C [32°F to 122°F]
<b>Storage Temp.</b>	-10°C to +60°C [14°F to 140°F]
<b>Material</b>	Clear polycarbonate, black ABS bezel for panel mounting
<b>Environmental Protection</b>	IP40/DIN40050
<b>Weight</b>	7.5g [0.3oz.]

### Ordering Information

**7000** - 6-Digit LCD Totalising Counter  
**7000AS** - Bi-directional, Add/Subtract version of above

### Ordering Information

**7016** - 6-Digit LCD Self-powered Counter